

14.69

USE ENCLOSURE PART TO LOCATE
(4) #14 MOUNTING SCREW PILOT
HOLES

HCE50S

SIDE MOUNT EXPANDABLE
ENCLOSURE 50'
MOUNTING TEMPLATE

UP

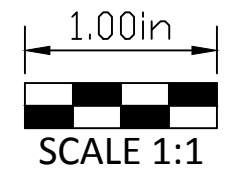
UP

9.56

4.18

6.09

USE TEMPLATE TO LOCATE AND DRILL
Ø-5/8" HOLE FOR INTERNAL HOSE
PLUMBING CONNECTION OPTION
WITH BULK HEAD FITTING



LOCATION FOR BULK HEAD
CONNECTION FOR EXTERNAL HOSE
PLUMBING OPTION
USING HOLE SAW FOR PLASTIC
CUT Ø-5/8" HOLE IN ENCLOSURE



HCE50S

SIDE MOUNT EXPANDABLE ENCLOSURE 50'

PARTS LIST

- THERMOFORMED ACRYLIC CAPPED ABS SIDE MOUNT ENCLOSURE FOR 50' HoseCoil EXPANDABLE HOSE (1)
- 50' EXPANDABLE HoseCoil HOSE (1)
- SPRAY NOZZLE (1)
- HCES-F2 RECONFIGURABLE SHUT OFF VALVE ASSEMBLY (1), BULK HEAD 1/2" BARBED FITTING TO MALE GARDEN HOSE FITTING
- S35 SCREWS, #14 x 1-1/2" TAMPER-PRUF CHROME PLATED STAINLESS STEEL ENCLOSURE MOUNTING SCREWS (4)
- MOUNTING SCREW NYLON WASHERS BLACK (4)
- 6" L HANDLE TAMPER-PRUF ALLEN WRENCH (1)
- INSTALLATION INSTRUCTION SHEET AND MOUNTING TEMPLATE

